



**INSERVIA**  
PROPACK PVT. LTD.

# INSERVIA ProPack

Elevate your brand with our premium range of pumps, sprays and caps.



# ABOUT US

At **Inservia ProPack Pvt. Ltd.** we transcend the ordinary, bringing innovation and excellence to the world of bottle packaging. Our journey is fuelled by the passion for redefining standards and elevating the aesthetics of product presentation.



## VISION

---

Lead in innovative bottle packaging solutions, inspiring product presentation.

## MISSION

---

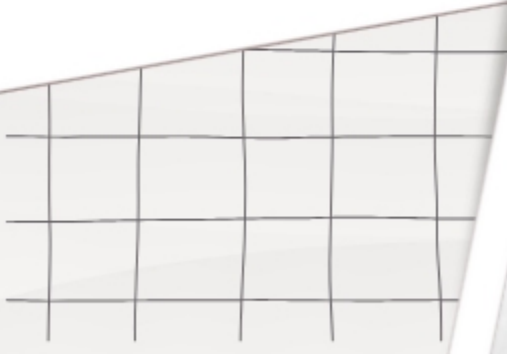
Our mission is to empower businesses through innovative packaging designs, recognizing the transformative impact of the right cap or pump.

## GOALS

---

Inservia Propack innovates bottle packaging, prioritizing customer satisfaction and loyalty.

# OUR PRODUCTS



# ALUMINIUM SLEEVES/ COLLAR

- **Size:** 18mm
- **MOQ:** 10,000 pcs
- **Customized colours can be developed**
- **Colours :**

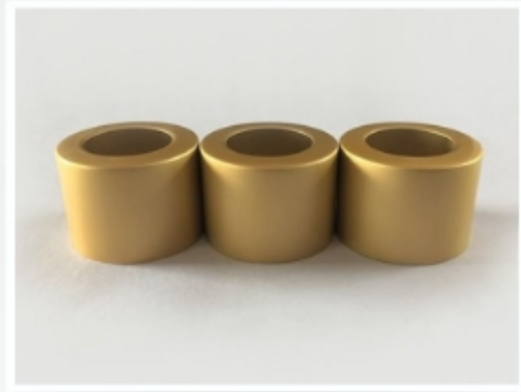


- **Application:** Glass Dropper Bottle, Mist Spray, Lotion Pump, Disc Top cap, Cream Pump, Serum Pump,

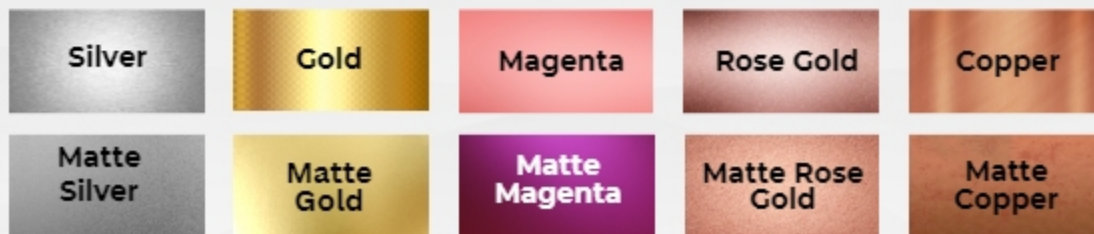


# ALUMINIUM SLEEVES/ COLLAR

- **Size:** 20/410
- **MOQ:** 10,000 pcs
- **Customized colours can be developed**
- **Colours :**

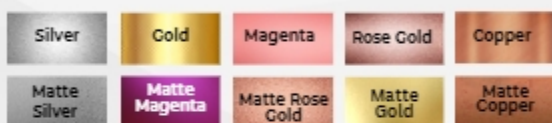


- **Application:** Lotion Pump, Mist Spray, Disc Top cap, Cream Pump, Serum Pump, Glass Dropper Bottle

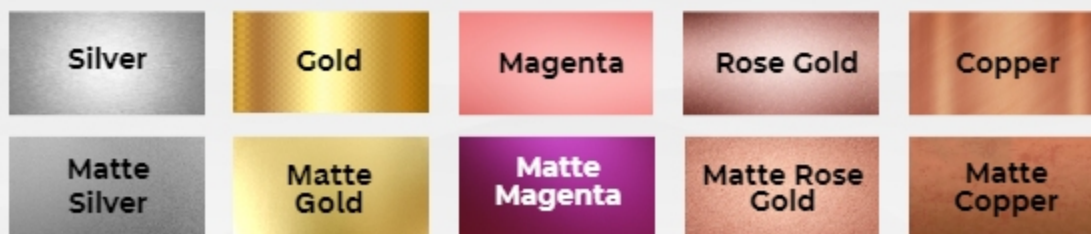


# ALUMINIUM SLEEVES/ COLLAR

- **Size:** 24 mm
- **MOQ:** 10,000 pcs
- **Customized colours can be developed**
- **Colours :**

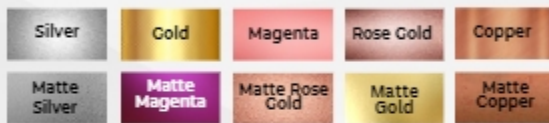


- **Application:** Lotion Pump, Mist Spray, Disc Top cap, Cream Pump, Serum Pump, Glass Dropper Bottle

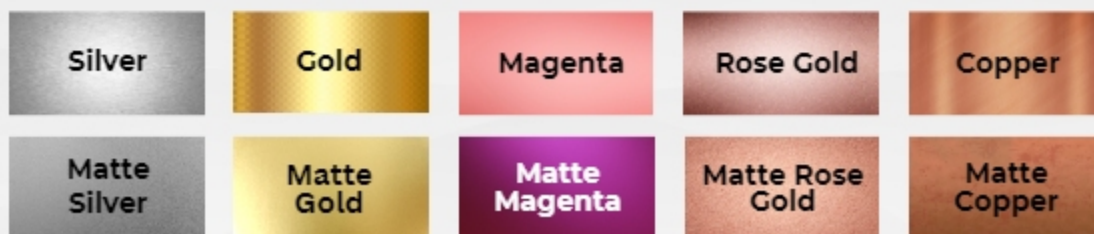


# ALUMINIUM SLEEVES/ COLLAR

- **Size:** 28 mm
- **MOQ:** 10,000 pcs
- **Customized colours can be developed**
- **Colours :**



- **Application:** Lotion Pump, Mist Spray, Disc Top cap, Cream Pump, Serum Pump, Glass Dropper Bottle

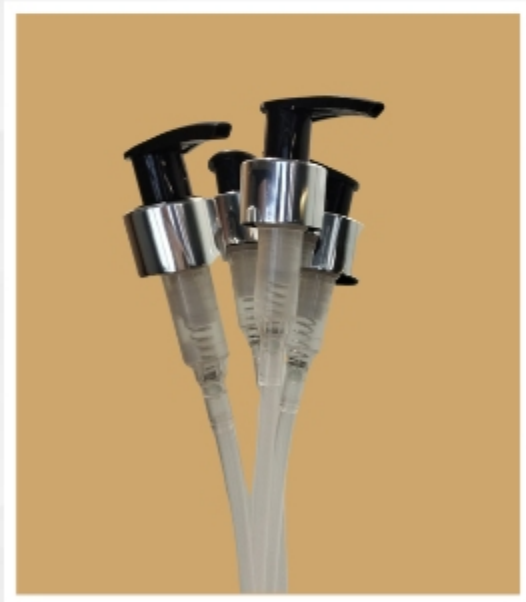


# LOTION PUMP

- **Type:** Screw, On/Off
- **Size:** 24
- **MOQ:** 1000
- **Lotion Pump Colours :** White, Black
- **Sleeve colours:**



- **Customized colours can be developed**





# LOTION PUMP

- **Type:** Screw, On/Off
- **Size:** 28
- **MOQ:** 1000
- **Lotion Pump Colours :** White, Black
- **Sleeve colours:**



- **Customized colours can be developed**



# MIST SPRAY

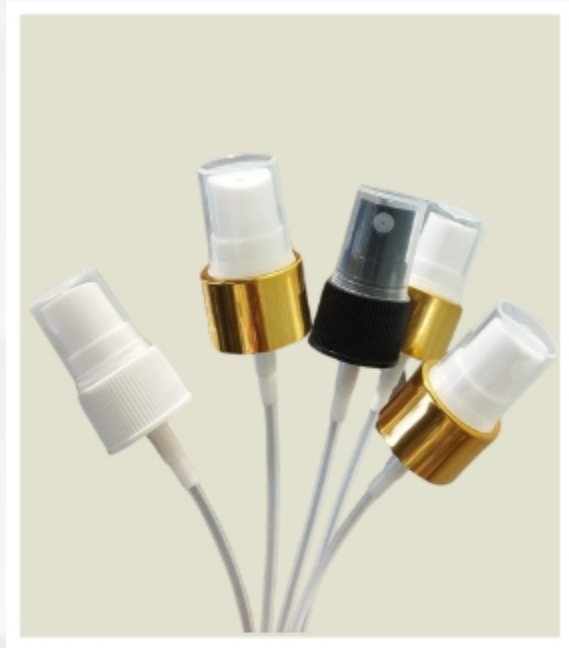
- **Size:** 20/410
- **Colours Available:** Black, White
- **MOQ:** 2000
- **Customized colours can be developed**
- **Sleeve colours:**

Silver	Gold	Magenta
Rose Gold	Copper	Matte Silver
Matte Gold	Matte Magenta	Matte Rose Gold
Matte Copper		



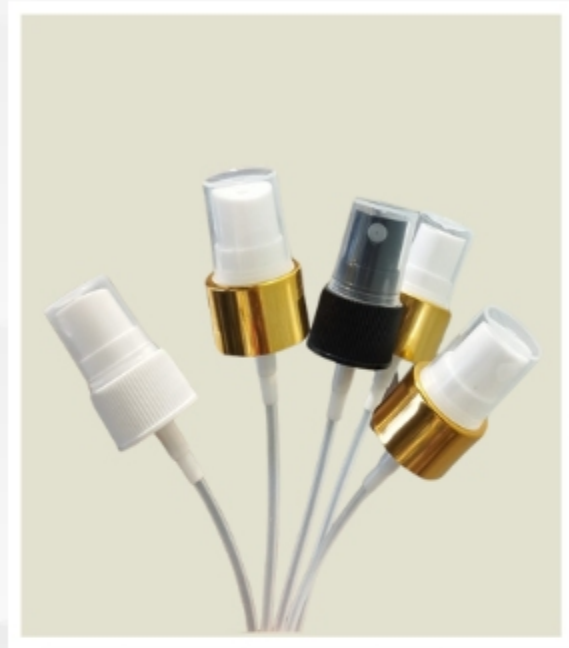
# MIST SPRAY

- **Size:** 24/410
- **Colours Available:** Black, White
- **MOQ:** 2000
- **Customized colours can be developed**
- **Sleeve colours:**



# MIST SPRAY

- **Size:** 28/410
- **Colours Available:** Black, White
- **MOQ:** 2000
- **Customized colours can be developed**
- **Sleeve colours:**



# DISCTOP CAP

- **Size:** 20/410
- **MOQ:** 2000
- **Customized colours can be developed**
- **Sleeve colours:**



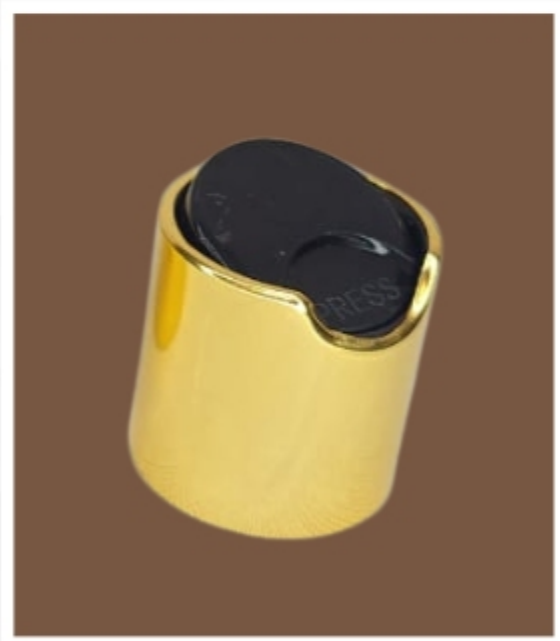
# DISCTOP CAP

- **Size:** 24/410
- **Mist Spray Colours:** Black, White
- **MOQ:** 2000
- **Customized colours can be developed**
- **Sleeve colours:**



# DISCTOP CAP

- **Size:** 28/410
- **Mist Spray Colours:** Black, White
- **MOQ:** 2000
- **Customized colours can be developed**
- **Sleeve colours:**



# CREAM PUMP

- **Size:** 20/410
- **Cream Pump Colours:** Black, White
- **MOQ:** 2000
- **Customized colours can be developed**
- **Sleeves colours:**



- **Size:** 24/410
- **Cream Pump Colours:** Black, White
- **MOQ:** 2000
- **Customized colours can be developed**
- **Sleeves colours:**





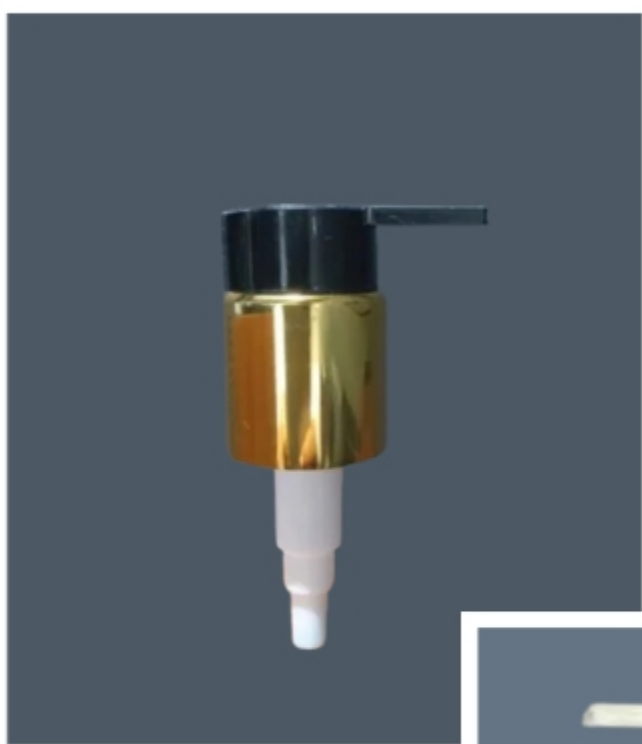
# SERUM PUMP

- **Size:** 18/415
- **Serum Pump Colours:** Black
- **MOQ :** 2000



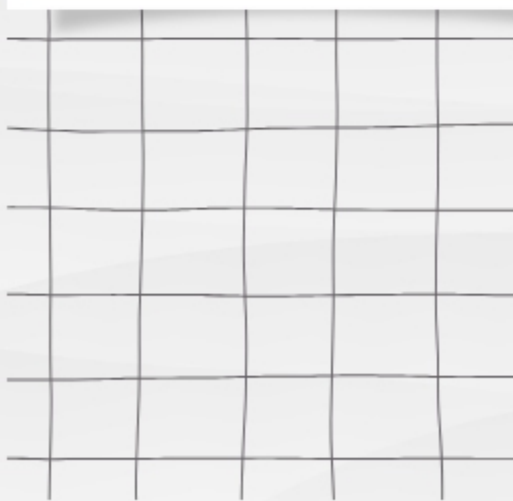
# SOUL PUMP

- **Size:** 24/415
- **Colours Available:** Black-Gold, White-silver
- **MOQ:** 1000



# TRIGGER SPRAY

- **Size:** 28/410
- **Colours Available:** Matte Black, White, Transparent Blue
- **MOQ:** As Per Trigger Spray Size



# MINI TRIGGER SPRAY

- **Size:** 20/410, 24/410, 28/410
- **Colours Available:** Natural
- **MOQ:** 1000



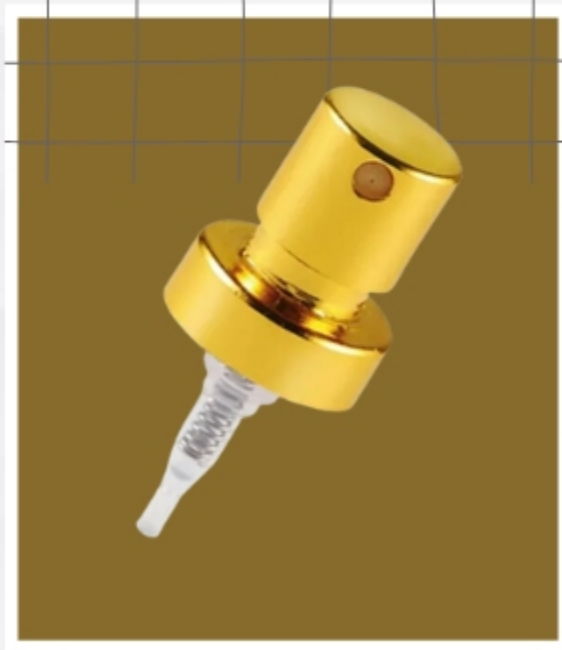
# FOAM PUMP

- **Size:** 30, 42
- **Colours Available:** White
- **MOQ:** As Per Foam Pump Size



# CRIMP PUMP

- **Size:** 18, 20
- **Colours Available:** Gold, Silver
- **MOQ:** 4000





Embark on a packaging journey with us. Let us be your partner in creating memorable, distinctive packaging that resonates with your brand ethos.

At **Inservia Propack Pvt. Ltd.** we don't just make caps and pumps we craft experiences that leave a lasting impression.

**OFFICE ADDRESS :** 503, ML Spaces, D.J Road, opp. McDonald's, Vile Parle (W), Mumbai 400056

**FACTORY ADDRESS :** Plot No. 7, Survey No. 2169, Parshwa Industrial Estate, Near Vardhman Plasto, New GIDC, Dehri, Umbergaon - 396 171

**Mobile :** +91 84510 90901

✉ [sales@inserviapropack.com](mailto:sales@inserviapropack.com)

✉ [info@inserviapropack.com](mailto:info@inserviapropack.com)

🌐 [www.inserviapropack.com](http://www.inserviapropack.com)